

Kawasaki Disease is the leading cause of acquired heart disease in children in the UK. It's time we changed that....

...**TOGETHER** we will.

December 2024

Dear Nursery Manager,

We NEED you to KNOW Kawasaki Disease!

Families who live in your community have asked us to get in touch – with an important message for all the children in your care. We really hope you will be able to help us!

It's a message to be aware of Kawasaki Disease – a childhood illness that every parent needs to know.

- Kawasaki Disease is increasingly common in the UK and it is **the leading cause of acquired heart disease in our children**.
- Raising awareness of Kawasaki Disease is extremely important, as recognising the symptoms and treating early could **save a child's heart from life-long damage**.
- It's a very serious children's disease which is **more common than some forms of bacterial meningitis**, yet too few parents, carers or doctors know about it.
- As a charity supporting families, we're working to do all we can to get Kawasaki Disease known and we'd be so grateful for your support!
- If you hold a fundraiser for us, we'd be pleased to send a certificate of fundraising, as well as promote the fabulous support of your nursery on our social media channels.

I have enclosed an information pack which I hope you will find helpful. It has all you need to share this essential information with your team, your parents and carers. We've included information leaflets, posters and more! The pack also includes posters for some easy fundraisers which your nursery could take part in, to raise funds for Societi anytime throughout January in the lead up to **International Kawasaki Disease Awareness Day – 26 January 2025**. We would hugely appreciate your support with a fundraiser to help us continue our vital work.

If you'd like any more information, or to let us know if you'd like to organise an awareness raising day in your nursery, please email us on info@societi.co.uk.

Thank you in advance for your help in raising awareness – it is so very important that everyone knows Kawasaki Disease, so that we can help protect our children's hearts.

Yours sincerely,



Rachael McCormack
Founder, Societi, the UK Foundation for Kawasaki Disease

Enc. School Information Pack
Further Kawasaki Disease information



Persistent fever



Cracked lips /
'strawberry' tongue



Rash



Swollen fingers/toes



Bloodshot eyes



Swollen glands

We NEED you to KNOW Kawasaki Disease



societì We are the UK Foundation for Kawasaki Disease



societì nursery's information pack

Kawasaki Disease is the leading cause of acquired heart disease in children in the UK

...it's time we changed that



societì.org.uk

Thank you for your interest in our nursery posters and leaflets pack and for wanting to raise awareness of Kawasaki Disease. We've created this poster pack to make it easy for you to raise awareness of Kawasaki Disease and funds for Societi Foundation at anytime throughout January in the lead up to **International Kawasaki Disease Awareness Day - 26 January 2025!** You may even get some ideas from the posters in this pack!

Click the red bars below to go straight to the resource, or scroll though the pack to see all of our posters. If you're unable to print out the information in this pack but would still like to raise awareness, please do [get in touch](#) and we can send you the resources you need. We'll always help where we can!

And... if you are planning on holding an event at your nursery, please do let us know! We'd love to promote what you're doing!

Awareness raising leaflets and posters

TEMPERS information leaflet

Our TEMPERS information leaflet includes a handy mnemonic to help parents easily remember the symptoms of Kawasaki Disease. It also includes lots of other useful information too and is great for raising awareness.

General awareness raising poster

Pin this poster in your nursery to help us let people know about Kawasaki Disease.

Fundraising posters

If you'd like to hold a fundraiser for Societi Foundation in your school, these posters can be used to help. We'd love to know about any awareness or fundraising you are planning at your nursery, so please do [let us know](#).

Wear Red Day

Cake Sale

Kawasaki Disease?

Remember TEMPERS

Children with Kawasaki Disease are characteristically irritable!

If a child has a **PERSISTENT FEVER** and two or more of these symptoms **THINK KAWASAKI DISEASE!**



Temperature - **Persistent high fever**



Erythema - reddened hands and feet with swelling



Mouth - dry, sore mouth, cracked lips, 'strawberry tongue'



Pace - **Treat early** to reduce potential heart damage



Eyes - bloodshot, non-sticky conjunctivitis

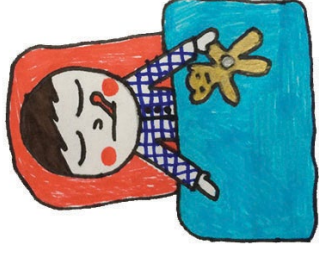


Rash



Swollen glands in neck, often just one side

5 days of ? fever ?
THINK Kawasaki Disease



Kawasaki Disease is the #1 cause of acquired heart disease in children in the UK...



...help us change this.

Kawasaki Disease - who does it affect?

It is mostly a childhood illness with over 75% of those affected being under 5 years old but it affects older children too.

Kawasaki Disease - what's the issue?

In the UK awareness of Kawasaki Disease is low. **Currently UK diagnosis and treatment times are too slow. 39% of babies (under one year) treated for Kawasaki Disease develop serious heart problems. 28% of diagnosed children experience heart complications. Overall, 19% of children treated develop serious heart damage. For a few children every year Kawasaki Disease is fatal ...help us change this.** We need everyone to know Kawasaki Disease as early diagnosis and treatment can prevent heart damage. (Data from BPSU Study, Kawasaki Disease UK & Ireland 2013-2015)

Kawasaki Disease - how common is it?

Hospital admissions in England for Kawasaki Disease have increased fourfold in the last ten years. It's more common than some types of meningitis. About 1 in 10,000 children are currently diagnosed each year and very poor levels of awareness mean many more children may be affected.

Kawasaki Disease - what can I do?

Know the symptoms and remember, symptoms may not appear all at once. Not all children present with all symptoms so - if a child has a **PERSISTENT FEVER** for **5 DAYS** or more with 2 or more of the symptoms overleaf **THINK Kawasaki Disease** and seek **URGENT medical advice.** **You** could save a child's heart.

Kawasaki Disease is serious! Awareness is urgent!

Today, most people haven't heard of Kawasaki Disease. That's one of the biggest challenges we face. Help us get it known because **Kawasaki Disease is increasingly common in the UK.** Too many children and young people today have lifetime heart damage because of Kawasaki Disease **...help us change this.** For more information visit societi.org.uk

Kawasaki Disease is predominantly a childhood illness though it can affect people of any age. Its cause is unknown. **Kawasaki Disease is the leading cause of acquired heart disease in children.** Awareness of Kawasaki Disease is currently low and it is often mistaken for other common childhood illnesses, leading to misdiagnosis and delayed treatment. Children who go untreated or who are treated later face higher risks of developing complications including life long heart damage.

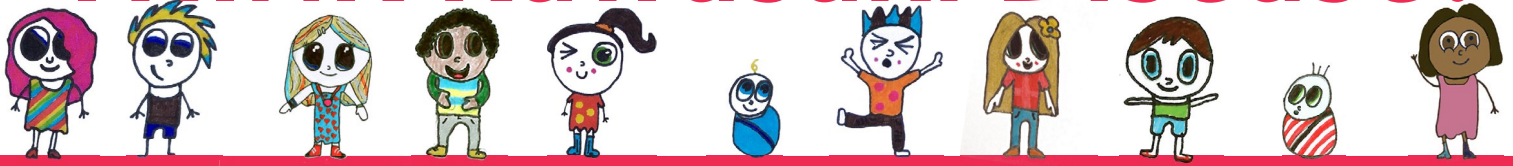
Early diagnosis and treatment are key to better outcomes

...for our children



The UK Foundation for Kawasaki Disease
www.justgiving.com/societi
societi.org.uk

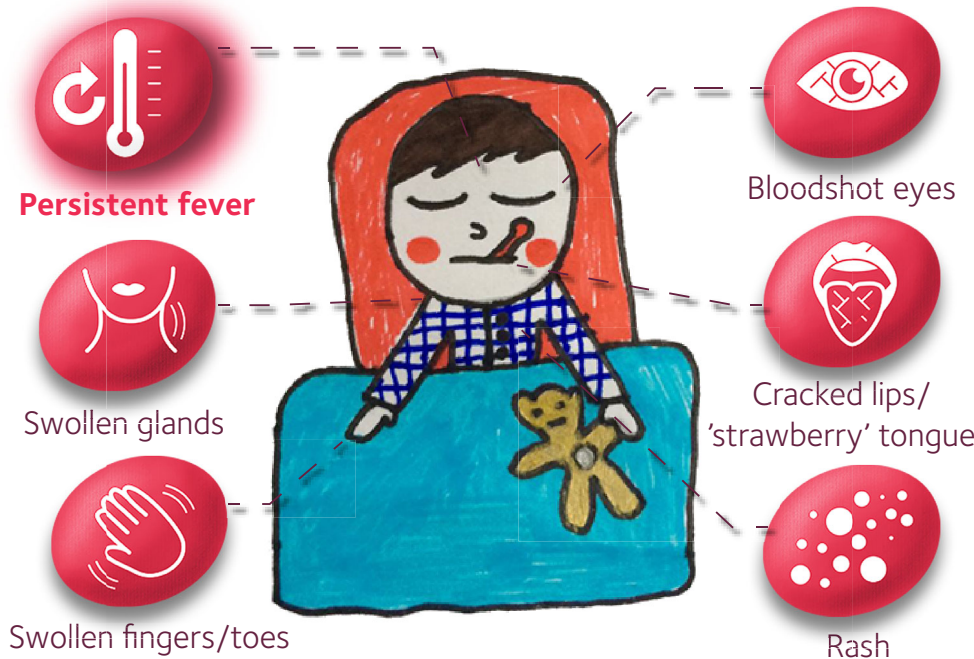
THINK Kawasaki Disease!



Kawasaki Disease is the leading cause of acquired heart disease in children in the UK. It's time we changed that...

...Together we will

Kawasaki Disease Symptoms:



If a child has a **persistent high fever** for 5 days or more, with TWO or more of these symptoms please **THINK Kawasaki Disease**

Kawasaki Disease can be present with **some or all** these symptoms

Kawasaki Disease is **increasingly common** in the UK

Please **EXPECT** to see it, be **READY** to treat it!

EARLY TREATMENT IS KEY

PLEASE DON'T DELAY! Children diagnosed and treated in **less than 5 days** from onset of fever have a **much reduced risk** of life long heart damage

BABIES UNDER 1 YEAR

can show **fewest symptoms** but have the **highest risk** of serious heart damage

Kawasaki Disease is mostly a childhood illness and there's no known cause. It's **the leading cause of acquired heart disease in UK children**.

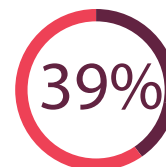
It's **often mistaken** for other common childhood illnesses, leading to delayed treatment. Children who are untreated or who are treated later face a much higher risk of developing serious complications, including life-long heart damage.

Babies under one year are at greatest risk of serious heart damage. **Early diagnosis and treatment is critical.**

Current UK & Ireland Outcomes for Kawasaki Disease



The current average diagnosis time for Kawasaki Disease is 7.8 days
This is too slow!



39% of babies with Kawasaki Disease develop coronary artery aneurysms
This is too high!



19% of children overall develop coronary artery aneurysms
This is too high!



28% of children overall have some heart damage
This is too high!

TOGETHER WE CAN CHANGE THIS!

Data from Tulloh et al, Kawasaki Disease: a prospective population survey UK & Ireland 2013-15

We NEED you to KNOW Kawasaki Disease

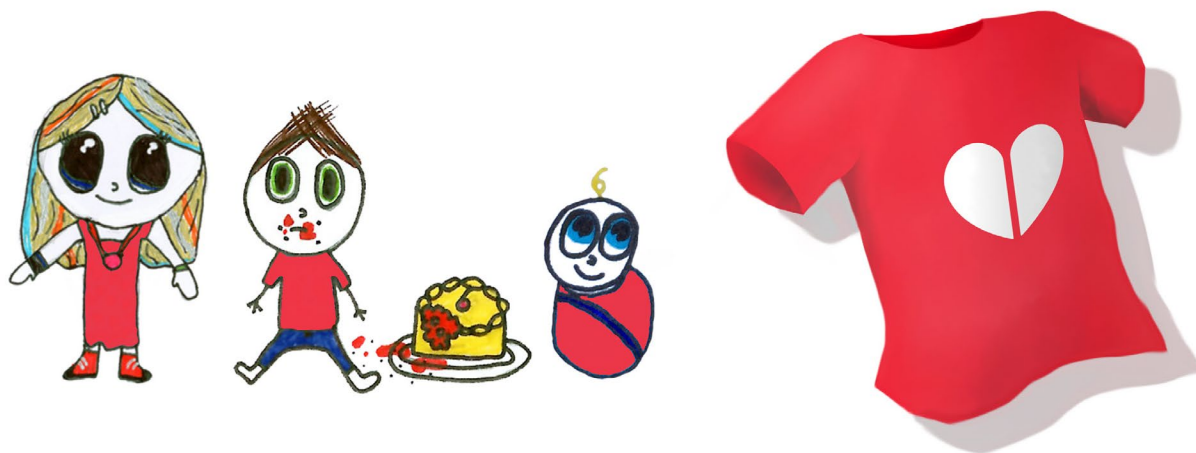


societì Wear Red Day! for Kawasaki Disease Awareness!

We're having a Wear Red Day!
Join us and help protect children's hearts!

Location:.....

Date:..... Time:.....



Kawasaki Disease is the leading cause of acquired heart disease in children in the UK – we want every parent and doctor to be able to recognise the symptoms and help protect children's hearts! **If a child has persistent fever plus any two or more of these symptoms, please THINK Kawasaki Disease!**

Would **you** know the symptoms?



Persistent fever



Cracked lips/'strawberry' tongue



Rash



Swollen fingers/toes



Bloodshot eyes



Swollen glands

@SocietiFoundation

@societi_uk_kd

societì We are the UK Foundation
for **Kawasaki Disease**


societi.org.uk



We **NEED** you to **KNOW** Kawasaki Disease



societì Cake Sale! for Kawasaki Disease Awareness!

*We're having a Cake Sale!
Join us and help protect children's hearts!*

Location:.....

Date:..... Time:.....



Would **you** know the symptoms?

Kawasaki Disease is the leading cause of acquired heart disease in children in the UK – we want every parent and doctor to be able to recognise the symptoms and help protect children's hearts! **If a child has persistent fever plus any two or more of these symptoms, please THINK Kawasaki Disease!**



Persistent fever



Cracked lips/'strawberry' tongue



Rash



Swollen fingers/toes



Bloodshot eyes



Swollen glands

 @SocietiFoundation

 @societi_uk_kd

societì We are the UK Foundation
for **Kawasaki Disease**


societi.org.uk

Further Kawasaki Disease Information

Kawasaki Disease is a very serious children's disease which is more common than some forms of bacterial meningitis, yet too few parents, carers or doctors know about it. Kawasaki Disease is increasingly common in the UK and it is the leading cause of acquired heart disease in our children. Raising awareness of the disease is very important, as recognising the symptoms and treating early could save a child's heart from life-long damage.

Kawasaki Disease symptoms can be similar to those of other common childhood diseases, such as a virus or scarlet fever. This can lead to a delay in diagnosis and treatment. Studies show that delays in treatment lead to a much higher risk of heart damage – so our work to get this disease known is urgent! Kawasaki Disease symptoms include a characteristic and persistent high fever for five days or more and two or more of these symptoms: bloodshot, non-sticky eyes; cracked lips/strawberry tongue; rash; swollen fingers/toes; swollen glands.

Kawasaki Disease can be present with some or all of these symptoms. A persistent high fever is the one defining symptom which will always be present. The symptoms of Kawasaki Disease can also appear in series (i.e. not all at once) over a few days. Children with Kawasaki Disease are also characteristically irritable.

In the UK, 39% of infants (babies under 1 year old) with Kawasaki Disease develop the most serious heart damage and 28% of all children who have the illness suffer some heart damage. Early diagnosis and treatment are key to reducing the risk of heart damage – which is why we'd really like your help to get Kawasaki Disease known. You can really help to protect children's hearts in your nursery and beyond.

We would love you to share the information included in this with staff, parent and carers. Perhaps you could place posters in the nursery or include within your newsletter. The QR code below links to a short awareness information animation which would also work well in a digital newsletter.



The animation can also be found by following this link: [Kawasaki Disease Awareness Animation](#)

We hope the Kawasaki Disease information we have provided is helpful to you. If you have any questions or would like more information, please do get in touch with the team at info@societi.co.uk



Persistent fever



Cracked lips /
'strawberry' tongue



Rash



Swollen fingers/toes



Bloodshot eyes



Swollen glands

