

THINK Kawasaki Disease..



...for our children

**Kawasaki Disease is the leading cause of acquired heart disease in UK children...
...faster diagnosis and treatment can change that!**

Symptoms

Remember **TEMPERS**

Children with **Kawasaki Disease** are characteristically irritable!

If a child has a **PERSISTENT FEVER** & two or more of these symptoms **THINK KAWASAKI DISEASE!**



T Temperature - **Persistent high fever**



E Erythema - reddened hands and feet with swelling



M Mouth - dry, sore mouth, cracked lips, 'strawberry tongue'



P Pace - **Treat early** to reduce potential heart damage



E Eyes - bloodshot, non-sticky conjunctivitis



R Rash



S Swollen glands in neck, often just one side

Numbers to Remember*

39% of treated infants develop coronary artery aneurysms

19% of treated children overall develop coronary artery aneurysms

#1 cause of acquired heart disease in UK children

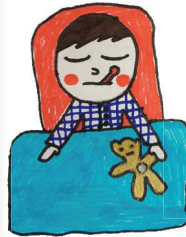
Case History

Case history is important in **Kawasaki Disease** - symptoms can appear over time. Not all symptoms appear in all children



5 days of fever?

THINK Kawasaki Disease



Acute Kawasaki Disease is always an emergency!

Differential Diagnosis

When ruling out the many other causes of fever in children...

...please **THINK Kawasaki Disease**.

~~Virus?~~

~~Scarlet Fever?~~

~~Meningitis?~~

~~Tonsillitis?~~

Please...THINK Kawasaki Disease

~~Slapped Cheek?~~

~~Strep Throat?~~

~~Measles?~~

Persistent Fever

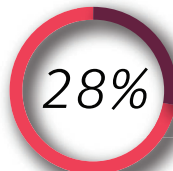


Kawasaki Disease should always be considered in any child with unexplained persistent fever

Increasingly Common

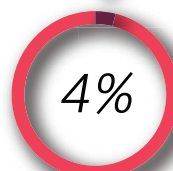
Hospital admissions increased in England **FOURFOLD** in the last decade - **EXPECT** to see it, **BE READY** to treat it

Heart Damage*



2016 Outcomes of treated children with heart damage

This is too high!



2020 Outcomes? (or less) of treated children with heart damage

Treatment Time*



5 days of fever?

Refer **URGENTLY** to paediatrician for **treatment within 5 days** from onset of fever

BPSU study findings show children treated early had a lower risk of lifetime heart damage than children treated later.

EARLY TREATMENT IS KEY to reduce risk of heart damage

...PLEASE DONT DELAY!



*BPSU survey Kawasaki Disease, UK and Ireland 2013-2015